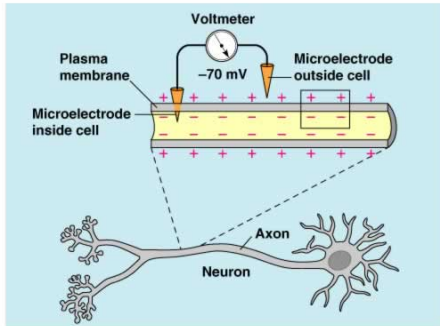
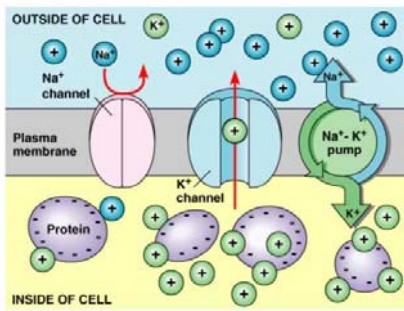


Resting Potential



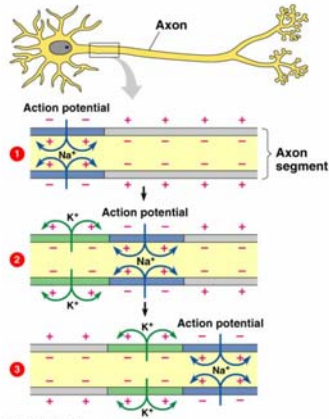
©Addison Wesley Longman, Inc.

Gated Channels

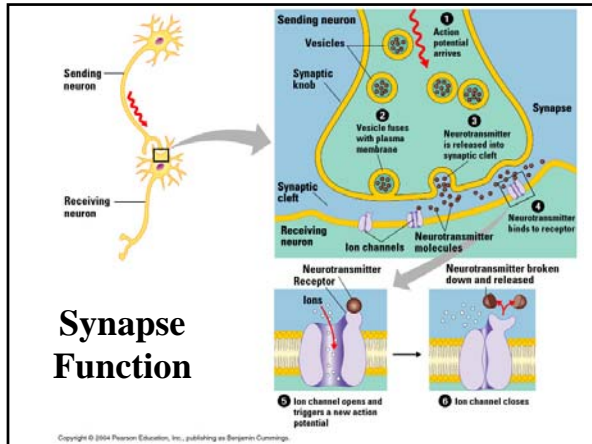


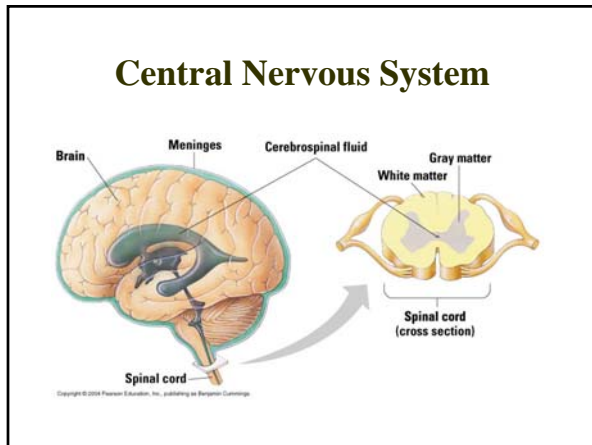
©Addison Wesley Longman, Inc.

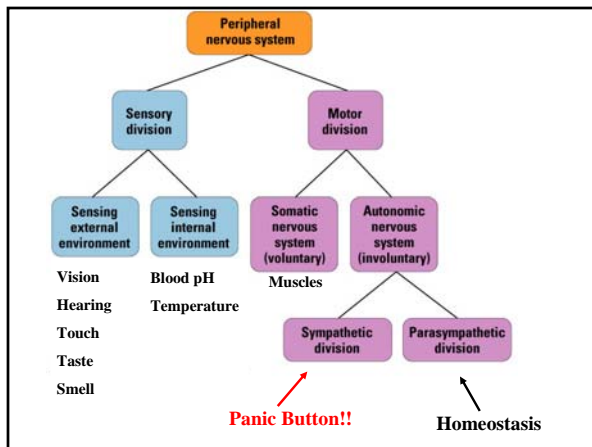
Action Potential

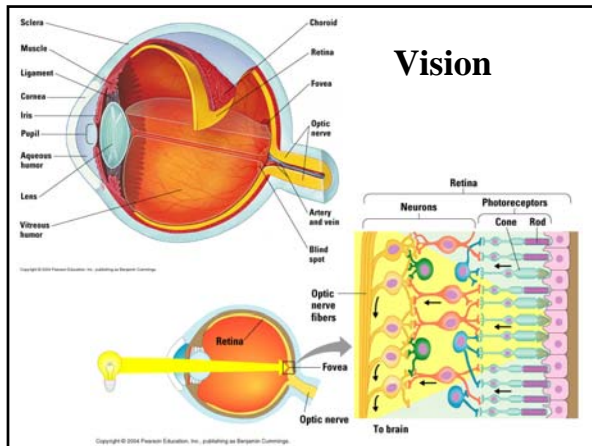


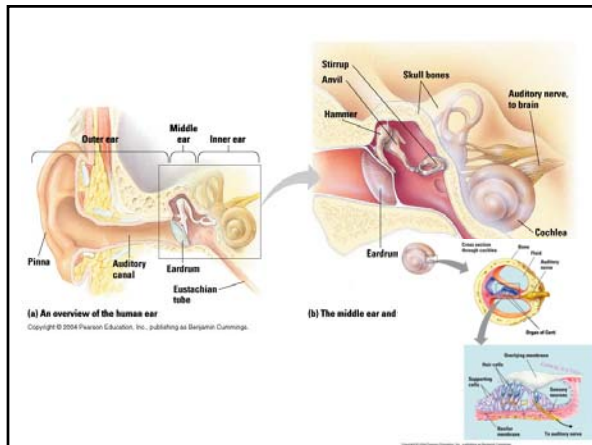
©Addison Wesley Longman, Inc.











PATHOLOGIES

- Demyelination Disorders
 - Heavy metal poisoning, Diphtheria, Guillain-Barre Syndrome, Multiple Sclerosis
- Menengitis
 - Bacterial or viral
- Others: Stroke, Parkinson's, Alzheimer's, Depression, Eating Disorders
