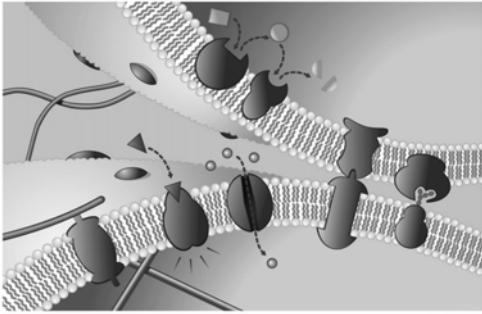
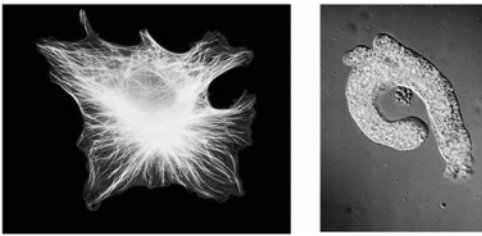


CELL MEMBRANE



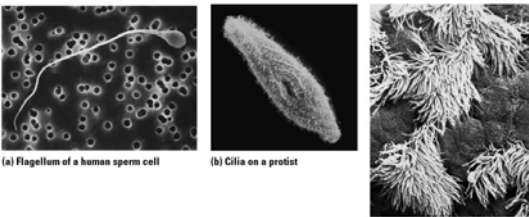
Copyright © 2004 Pearson Education, Inc., publishing as Benjamin Cummings.

CYTOSKELETON



Copyright © 2004 Pearson Education, Inc., publishing as Benjamin Cummings.

FLAGELLA & CILIA



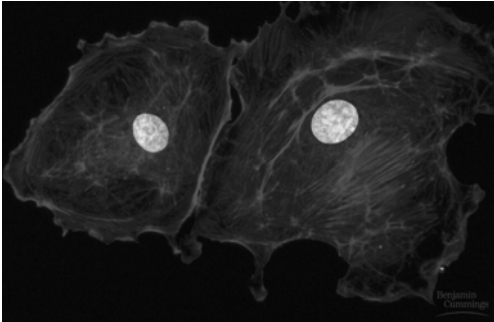
(a) Flagellum of a human sperm cell

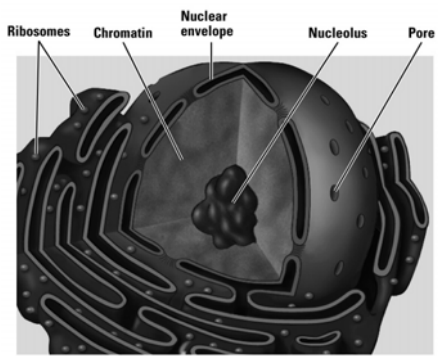
(b) Cilia on a protist

(c) Cilia lining the respiratory tract

Copyright © 2004 Pearson Education, Inc., publishing as Benjamin Cummings.

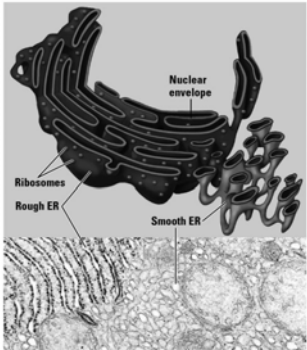
NUCLEUS



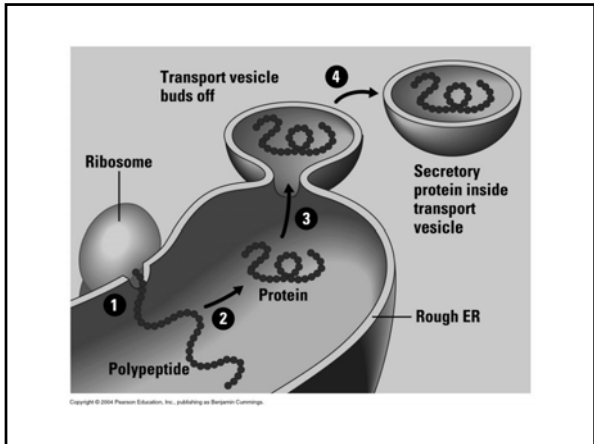


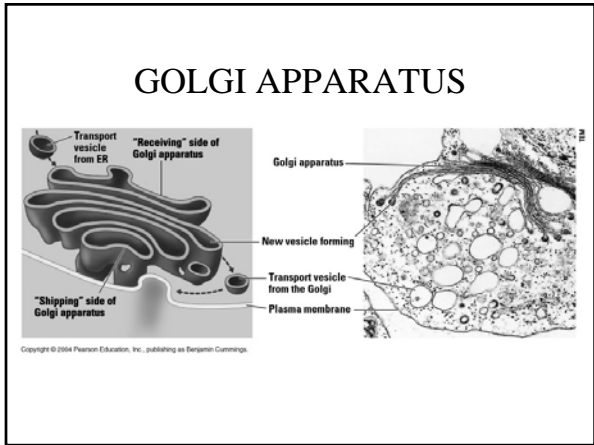
Copyright © 2004 Pearson Education, Inc., publishing as Benjamin Cummings.

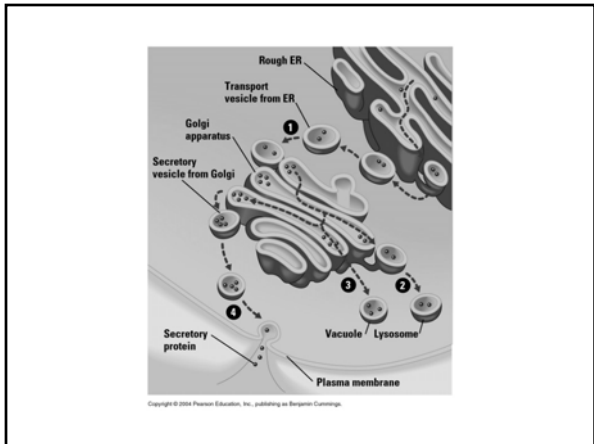
ENDOPLASMIC RETICULUM



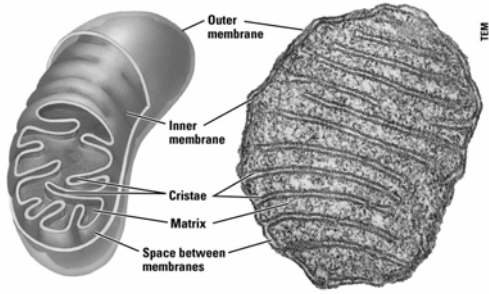
Copyright © 2004 Pearson Education, Inc., publishing as Benjamin Cummings.



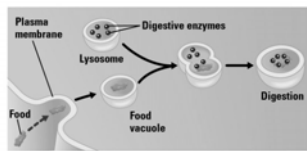




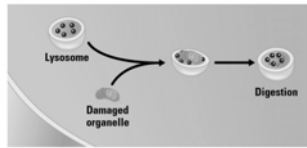
MITOCHONDRIA



Copyright © 2004 Pearson Education, Inc., publishing as Benjamin Cummings.



(a) Lysosome digesting food



(b) Lysosome breaking down damaged organelle

Copyright © 2004 Pearson Education, Inc., publishing as Benjamin Cummings.
