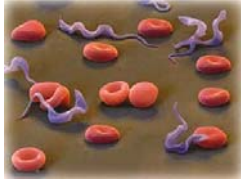
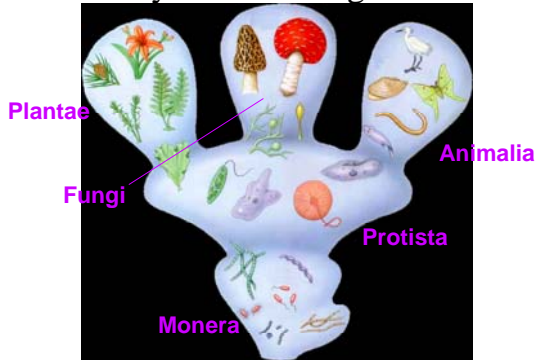


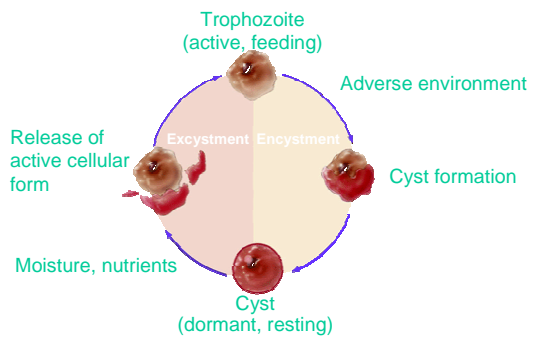
Protists



Eukaryotic microorganisms



Protozoans general life cycles



General Characteristics of Protists



http://biology.unm.edu/ccouncil/Biology_203/Summaries/Protists.htm

Classification of Protists

- Photosynthetic autotroph
- Chemosynthetic autotroph
- Heterotroph by ingestion
- Heterotroph by absorption

http://biology.unm.edu/ccouncil/Biology_203/Summaries/Protists.htm

Classification of Protists

- Archaezoa**
- Euglenozoa**
- Alveolata**
- Stramenopila**
- Chlorophyta**
- Rhodophyta**
- Mycetozoa (Slime Molds)**

http://biology.unm.edu/ccouncil/Biology_203/Summaries/Protists.htm

Classification of Protists

Protozoans: Animal-like protists

Amoeboids

Ciliates

Sporozoa

Algae: Plant-like protists

Green-algae

Red-algae

Brown algae

Fungi-like protists

potato blight

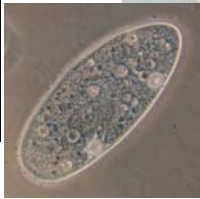
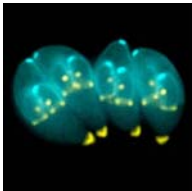
sudden oak death

Protozoans: Animal-like Protists

Amoeboids

Ciliates

Sporozoa



Entamoeba histolytica

Trophozoite

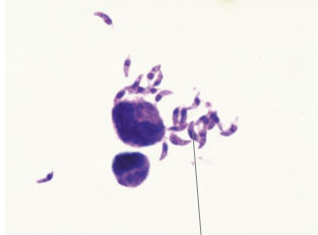


Cyst



Toxoplasma gondii

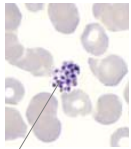
Toxoplasmosis



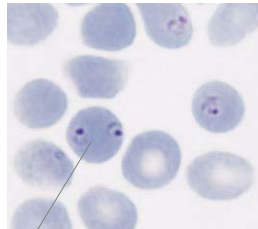
Bow-shaped cells

Plasmodium spp.

malaria



schizont



Infected RBC




Algae: Plant-like Protists

- Green-algae
- Red-algae
- Brown algae

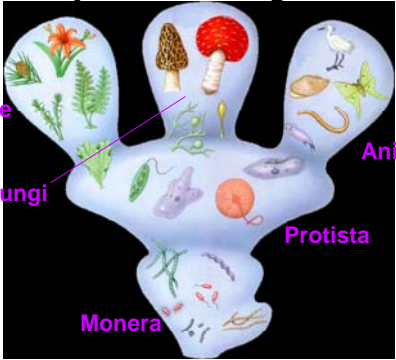


Classification of Protists

Fungi-like protists
 potato blight
 sudden oak death

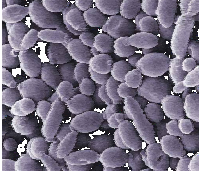
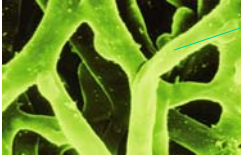





Eukaryotic microorganisms



Plantae
 Fungi
 Monera
 Protista
 Animalia

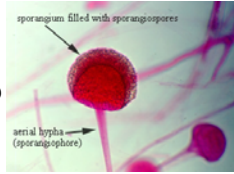
Fungal Anatomy: Thalli

hyphae
 mycelium

Fungal Anatomy: Fruiting Bodies

- Sporangiospores (sac)



- Chlamydo­spores (walled in)



- Conidiospores (no sac)



Fungi Classification

Zygomycota:
Bread Mold
Ex. *Rhizopus*

Basidiomycota:
Club fungi

Ascomycota:
Sac Fungi
Ex. *Saccharomyces*

Deuteromycota:
Imperfecti
Ex. *Penicillium*,
Aspergillus

Important molds: *Rhizopus spp.*



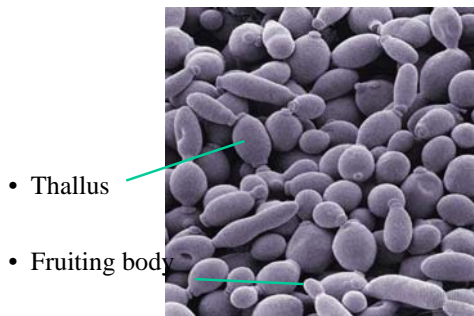
Important molds: *Aspergillus* spp.



Important molds: *Penicillium* spp.



Important yeasts: *Saccharomyces cerevisiae*

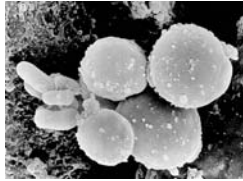


- Thallus
- Fruiting body

Important yeasts: *Candida albicans*



"Thrush"



Diaper rash

Club Fungi: *Amanita & Agaricus spp.*